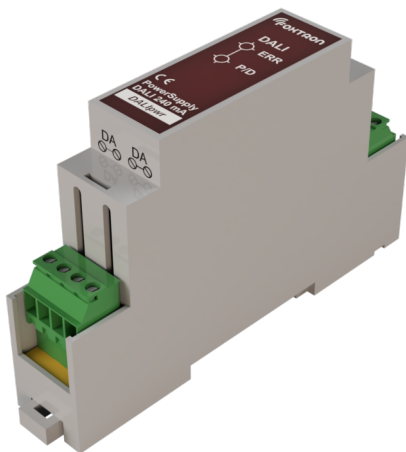


# User manual

version 1.3

## DALIpwr



Power supplier DALI

Signalization of input voltage

Signalization of bus communication

Signalization of short-circuit on the bus

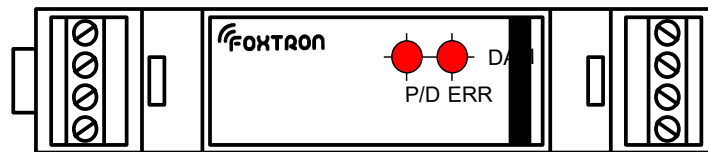
Maximum load 240mA

DIN rail mount (1 module)

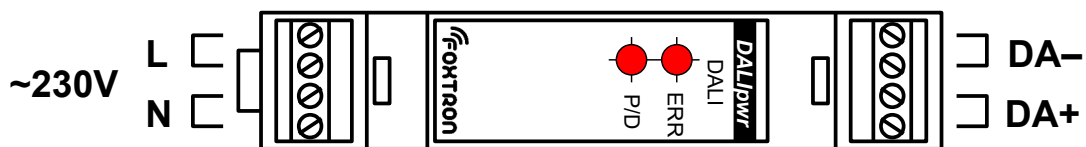
Short-circuit and overload protection

Technical specification		
Power supply	85 ÷ 265	V
Output current	240	mA
wires cross section	0,08 – 1,5	mm <sup>2</sup>
ingress protection rating	IP20	
Surrounding work temperature	0 ÷ 50	°C
Storage temperature	-10 ÷ 70	°C
weight	50	g
galvanic separation	4000	V

Signaling	
P/D	Power/Data permanent light – connection of power supply blinking – ongoing communication DALI bus
Err	short-circuit/overload on DALI bus
P/D + Err	230V connected to secondary side (DALI)

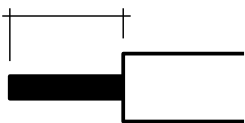


### Terminals connection

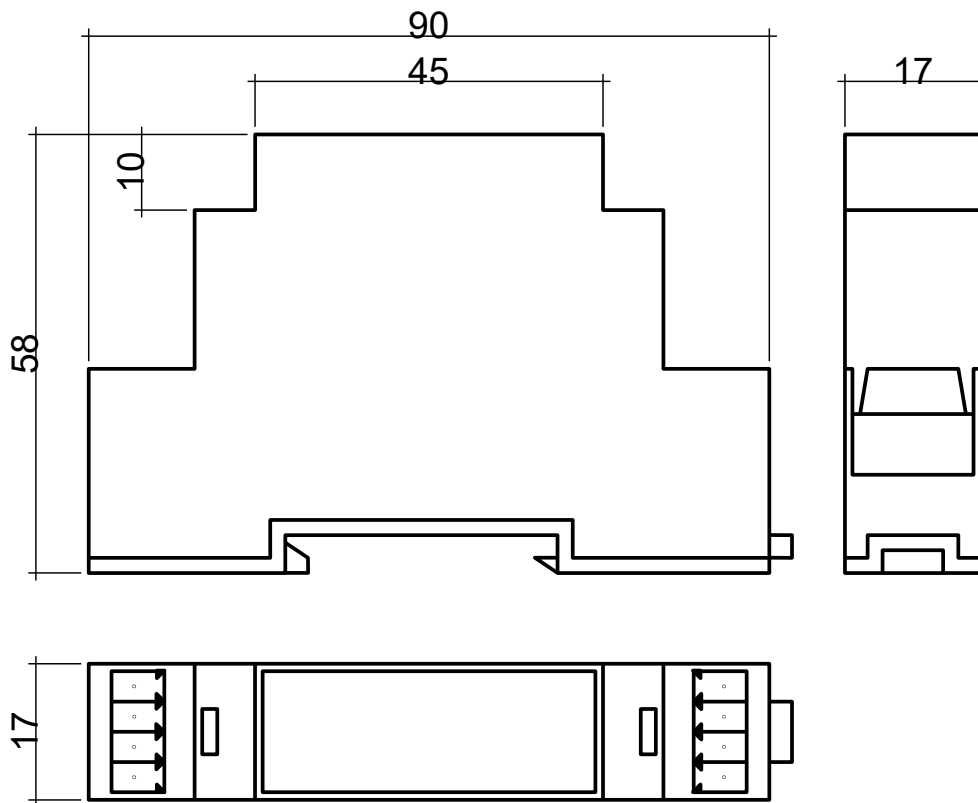


DA – DALI bus connection

*preparation of conductor*



Dimensions (in mm)





tel: +420 226 522 222  
e-mail: [info@foxtron.cz](mailto:info@foxtron.cz)  
web: [www.foxtron.eu](http://www.foxtron.eu)